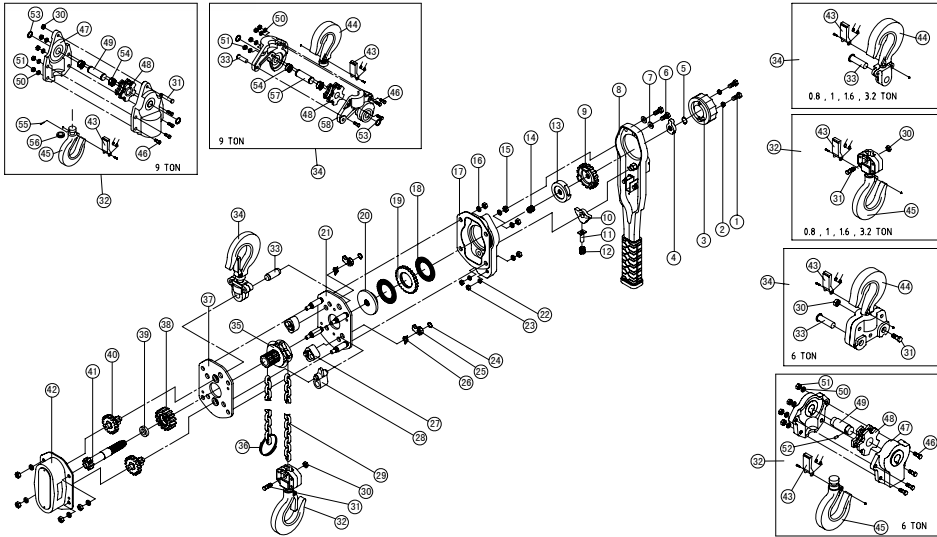


Parts Breakdown



Parts List

NO.	Part No	Part Name	Q'ty
1	L1401	Hex. Recess Bolt	2
2	L1441	Spring Washer	2
3	L1001	Hand Wheel	1
4	L1002	Stopper	1
5	L1461	C- Ring	1
6	L1402	Hex. Bolt	2
7	L1442	Spring Washer	2
8	L1003	Lever Outside Assembly	1
9	L1004	Feed Gear	1
10	L1005	Feed Ratchet	1
11	L1006	Ratchet Spring Pin	1
12	L1007	Ratchet Spring	1
13	L1011	Feed Gear Cover	1
14	L1012	Free Wheeling Spring	1
15	L1421	Hex. Nut	8
16	L1443	Spring Washer	8
17	L1010	Lever Inside Assembly	1
18	L1013	Brake Disk	2
19	L1014	Ratchet Wheel	1
20	L1015	Disk Hub	1
21	L1201	Lever Side Plate Assembly	1
22	L1444	Spring Washer	2
23	L1423	Hex. Nut	2
24	L1462	E-Ring	2
25	L1205	Ratchet	2
26	L1206	Ratchet Spring	2
27	L1203	Chain Guide	2
28	L1202	Chain Stripper	1
29	L1901	Load Chain	1

NO.	Part No	Part Name	Q'ty
30	L1422	Nylon Lock Nut	1
31	L1214	Bolt	1
32	L1215	Bottom Hook Assembly	1
33	L1210	Top Hook Pin	1
34	L1208	Top Hook Assembly	1
35	L1216	Load Sheave Assembly	1
36	L1213	Chain Stopper	1
37	L1211	Gear Side Plate Assembly	1
38	L1217	Fourth Gear	1
39	L1218	Washer	1
40	L1219	Second/Third Gear Assembly	2
41	L1220	Pinion Gear	1
42	L1221	Gear Case Assembly	1
43	L1209	Safety Latch Assembly	2
44	L1222	Top Hook	1
45	L1223	Bottom Hook	1
46	L1403	Hex. Recess Bolt	8
47	L1224	Lower Hook Block Half	2
48	L1225	Sheave Wheel	2
49	L1226	Sheave Shaft(Bottom Hook)	1
50	L1445	Spring Washer	8
51	L1424	Hex. Nut	8
52	L1227	Spring Pin	1
53	L1463	C- Ring	4
54	L1228	Needle Bearing	4
55	L1229	Dowel	1
56	L1230	Rolling Bearing	1
57	L1231	Sheave Shaft(Top Hook)	1
58	L1232	Upper Hook Block Half	2



OPERATION MANUAL OF LEVER HOIST

— SAFETY PRECAUTIONS —



DANGER

Lever hoist is designed to pull heavy load. Neglect of following safety precautions might cause the damage to the pulled objects and / or either injury and death disaster.

<p>1 2</p>	
<p>Never pull over rated load.</p>	<p>Never use deforming or malfunctioning lever hoist.</p>
<p>3 4</p>	
<p>Never use the load chain to wrap the pulling object and never use when top hook and lower hook do not in line.</p>	<p>Never handle the lever with impact force.</p>
<p>5 6</p>	
<p>Never use with twisted or kinked load chain.</p>	<p>Never over pulling when load chain reached up or down limit.</p>
<p>7 8</p>	
<p>Never stand under the pulling objects.</p>	<p>Never use two lever hoist pulling one object.</p>

READ FOLLOWING CAREFULLY BEFORE THE USE OF LEVER HOIST

In using should follow all safety precautions, and always keep the lever hoist in good conditions. Never neglect any single precautions.

OPERATION

- (1). Pull up, move direction indicator position "UP", pull lever up and down.
- (2). Pull down, move direction indicator do position "DOWN", pull lever up and down.

FREE CHAIN

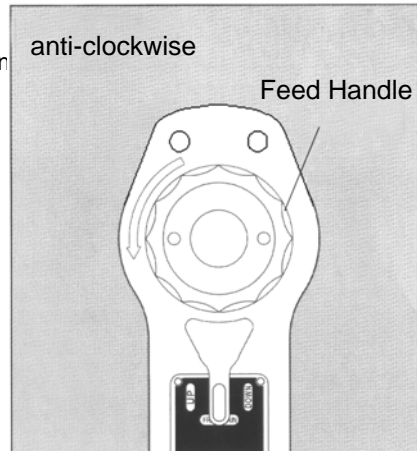
Move direction indicator position "F" in center, and turn the running wheel anti-clockwise at least 90 degree, the load chain can be pull up or down freely by hand.

CAUTION

In free chain application never hook and load.

MAINTENANCE AFTER USING

First should clean dust, water, moisture, thoroughly, and lubricate the load chain, hook, and all revolving parts then keep in dry place.



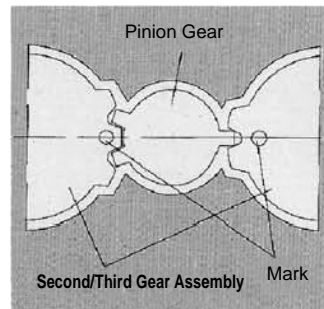
INSPECTION BEFORE USE

Each time before put lever hoist into use, need to inspect the unit, any deformed of parts need to be replaced.

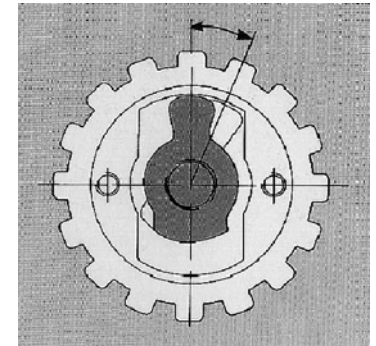
- (1). Outlooking inspection: Please inspect any deformation happen of followings; load chain, top and bottom hook, bolts, safety latch, chain stopper, lever outside, hook block half and cover, any deform being found replace it.
- (2). Disassembling inspection: Periodically disassemble the unit and check for any deformation or wore out of followings; ratchet, ratchet wheel, brake disk, free wheel spring, gears and load sheave, being found replace it.
- (3). Be sure the two sides of brake disk are clean and not oily.

DISASSEMBLING AND ASSEMBLING PROCEDURE

- (1). Disassembling: please refer to exploded view drawing, start from right hand side, step by step according to the sequence.
- (2). Transmission and gear parts: please refer to exploded view drawing, start from left hand side, step by step according to the sequence.
- (3). The 2nd and 3rd gear assembled, please refer to the drawing, the pinion should match the 2nd and 3rd gear stamping mark always in line then can be reassembled. If not matching in line the gear will be stuck unable to turn.



- (4). All the gear, please spray the proper quantity of geese and the transmission shaft or axle should be lubricated properly.
- (5). After gear parts being reassembled, when putting stopper on, you should check by turning direction indicator to the right then you will hear a click sound. It means stopper proper press the gear into feed ratchet. If you can not hear the click sound, move the stopper clockwise a little bit per drawing shown, then you will hear the click sound.

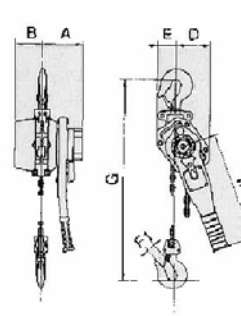


SPECIFICATIONS

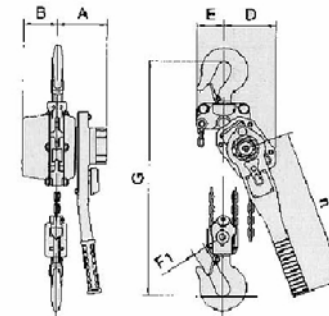
specifications and dimensions are subject to change without notice.

Type	L-080	L-100	L-160	L-320	L-600	L-900
Rated capacity (ton)	0.8	1.0	1.6	3.2	6.0	9.0
Lift height (m)	1.5	1.5	1.5	1.5	1.5	1.5
Chain dia (mm)	5.6	6.3	7.1	9.0	9.0	9.0
Net weight (kg)	6.1	7.0	10.7	16.2	31	55
Min distance between hooks(G) (mm)	290	325	370	470	620	830
Length of operating handle(n) (mm)	265	265	400	416	416	416
Pull on lever to lift full load (kgf)	25	30	30	36	38	39
Dimensions (mm)	A	100	100	99	104	104
	B	55	55	65	81	81
	D	80	80	103	120	164
	E	41	41	47	55	62
	F ₁	28	36	38	50	50

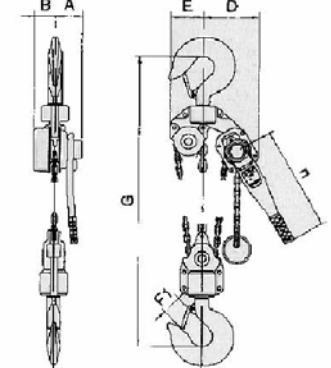
0.8~3.2TON



6TON



9TON



In addition to the standard lift, we offer up to 12m lift.